

# SELF CONTAINED COMPACTOR AND POWER UNITS DEALER PREDELIVERY CHECK SHEET

TO BE CHECKED BY DEALER

CUSTOMER \_\_\_\_\_ DATE \_\_\_\_\_

ADDRESS \_\_\_\_\_

DEALER \_\_\_\_\_

ADDRESS \_\_\_\_\_

COMPACTOR MODEL \_\_\_\_\_ SERIAL NUMBER \_\_\_\_\_

POWER UNIT MODEL \_\_\_\_\_ SERIAL NUMBER \_\_\_\_\_

## DEALER CHECK:

1. \_\_\_\_ Check that electrical current is compatible with power unit being installed. Convert voltage if not compatible. Check amp setting.
2. \_\_\_\_ Check screw torque on all electrical terminals and components in power panel.
3. \_\_\_\_ Check that all hydraulic hoses and fittings are tight and free of any shipping damages.
4. \_\_\_\_ Check that all safety decals are in place and legible. Have requirements of current ANSI Z245 Standards been met.
5. \_\_\_\_ Check that hydraulic reservoir is full of oil to level specified in owner's manual.
6. \_\_\_\_ Check that hydraulic hoses are installed on correct ports of power unit.
7. \_\_\_\_ Power unit operates correctly after installation and cycles ram through complete cycle.
8. \_\_\_\_ Check emergency stop, start, and reverse function.
9. \_\_\_\_ Check condition of door seal and that it is properly adjusted.
10. \_\_\_\_ Check that hydraulic quick couplers are on correct side for customer installation.
11. \_\_\_\_ Compactor installation and start-up instructions in the owner's manual have been reviewed and followed.
12. \_\_\_\_ Customer has been given owner's manual with specific attention given to safety and operation instructions contained herein.

DELIVERED BY \_\_\_\_\_ DATE \_\_\_\_\_

1. \_\_\_\_ Owner's manual has been provided.
2. \_\_\_\_ Warranty card is filled out and mailed.
3. \_\_\_\_ Reviewed the safety warnings and cautions listed in this manual.
4. \_\_\_\_ Reviewed the maintenance and cautions as listed in this manual.

REVIEWED BY \_\_\_\_\_ DATE \_\_\_\_\_

# Table of Contents

Rev.6/07

WARRANTY		Power Unit 80% Full Light Adjustment	O11
DEALER PREDELIVERY CHECK SHEET	1	Power Unit 100% Full Light Adjustment	O11
TABLE OF CONTENTS	2	Multicycle Timer Setting Procedure	O12
SPECIFICATIONS	3-6	GENERAL MAINTENANCE TIPS	O12
SAFETY DECAL INFORMATION	7-8	TROUBLE-SHOOTING	O12 - O14
<b><u>OPERATING INSTRUCTIONS</u></b>		INSTRUCTIONS FOR CONVERTING 5 HP 3-PHASE POWER UNIT VOLTAGE	O15
INSTALLATION INSTRUCTIONS	01	INSTRUCTIONS FOR CONVERTING 10HP 3-PHASE POWER UNIT VOLTAGE	O16
Installation Site	01	OIL HEATER INSTALLATION INSTRUCTIONS	O17
Safety Decal Requirements	01	HYDRAULIC GAGE KIT -10HP INSTRUCTIONS	O18
Electrical Installation	02	HYDRAULIC GAGE KIT INSTALLATION INSTRUC.	O19
Hydraulic Hose Installation	03	DOOR KNOB / LOCK SET REPAIR	O20
Push-Button Controls	03		
START-UP AND TESTING INSTRUCTIONS	04	<b><u>PARTS SECTION</u></b>	
OPERATING INSTRUCTIONS	04	COVER PLATES & ROLLERS	P1
Employer Responsibility for Compactor	05	REAR DOOR ASSEMBLY	P3
Operating Instructions for Standard Compactors	05	HI-TAIL DOOR ASSEMBLY	P5
Optional Features	06	HI-TAIL DOOR SEAL	P6
MAINTENANCE INSTRUCTIONS	06	HYDRAULIC HOSES & FITTINGS	P7
Work Area Around Compactors	06	10HP 3-PHASE POWER UNIT	P9
HYDRAULIC SAFETY: PLEASE READ CAREFULLY	06	5HP POWER UNIT	P11
Avoid Heating Near Pressurized Lines	07	10HP POWER PANEL	P13
Warnings pertaining to common abuses of hoses	07	5HP POWER PANEL	P15
Preventive Maintenance	07	PRINCE HYDRAULIC CYLINDER ASSEMBLY	P16
Initial Check	07	ENERGY HYDRAULIC CYLINDER ASSEMBLY	P17
After Emptying	07	10HP HYDRAULIC SCHEMATIC - BY-PASS	P18
Monthly Check	07	5HP HYDRAULIC SCHEMATIC - BY-PASS	P19
3-Month Check	07	ELECTRIC SCHEMATIC BY-PASS FOR:	
Maintenance Instructions for Tailgate Seals	08	10HP 220 VOLT 3 PHASE (MULTI-CYCLE)	P21
Filter Maintenance	08	10HP 220 VOLT 3 PHASE (JOG LIGHT)	P20
Yearly Check	08	5HP SINGLE PHASE (MULTI-CYCLE)	P22
Lubrication	08	5HP SINGLE PHASE (JOG CONTROL)	P23
Cylinder Pivot Pin Inspection	09	SIDE DOOR HOPPER W/ LOCK	P25
Rear Door Seal Inspection and Replacement	09	DECALS	P27
By-Pass Power Unit Timer Adjust. Procedure	O10	ELECTRIC INTERLOCK ASSEMBLY	P28
By-Pass Power Unit Pressure Adjust. Procedure	O11		

# SPECIFICATIONS FOR KP1SC SELF-CONTAINED AND KP1HT HI-TAIL SELF CONTAINED

Rev.10/05

## ELECTRICAL EQUIPMENT

Motor • 10HP 208/230/460 3 Phase 60 Cycle  
Optional Motor • 5HP 220V 1 Phaste 60 Cycle  
Control voltage ..... 115 VAC  
Key operated Start / Stop / Reverse

## SPECIFICATIONS

Charge Chamber Capacity  
Mfg. rating ..... 1 yd<sup>3</sup>  
Wastec rating ..... .74 yd<sup>3</sup>  
Clear top opening ..... 32" L x 46" W  
Ram face ..... 22.5 " x 48"  
Loading Height (STD.) ..... 44"

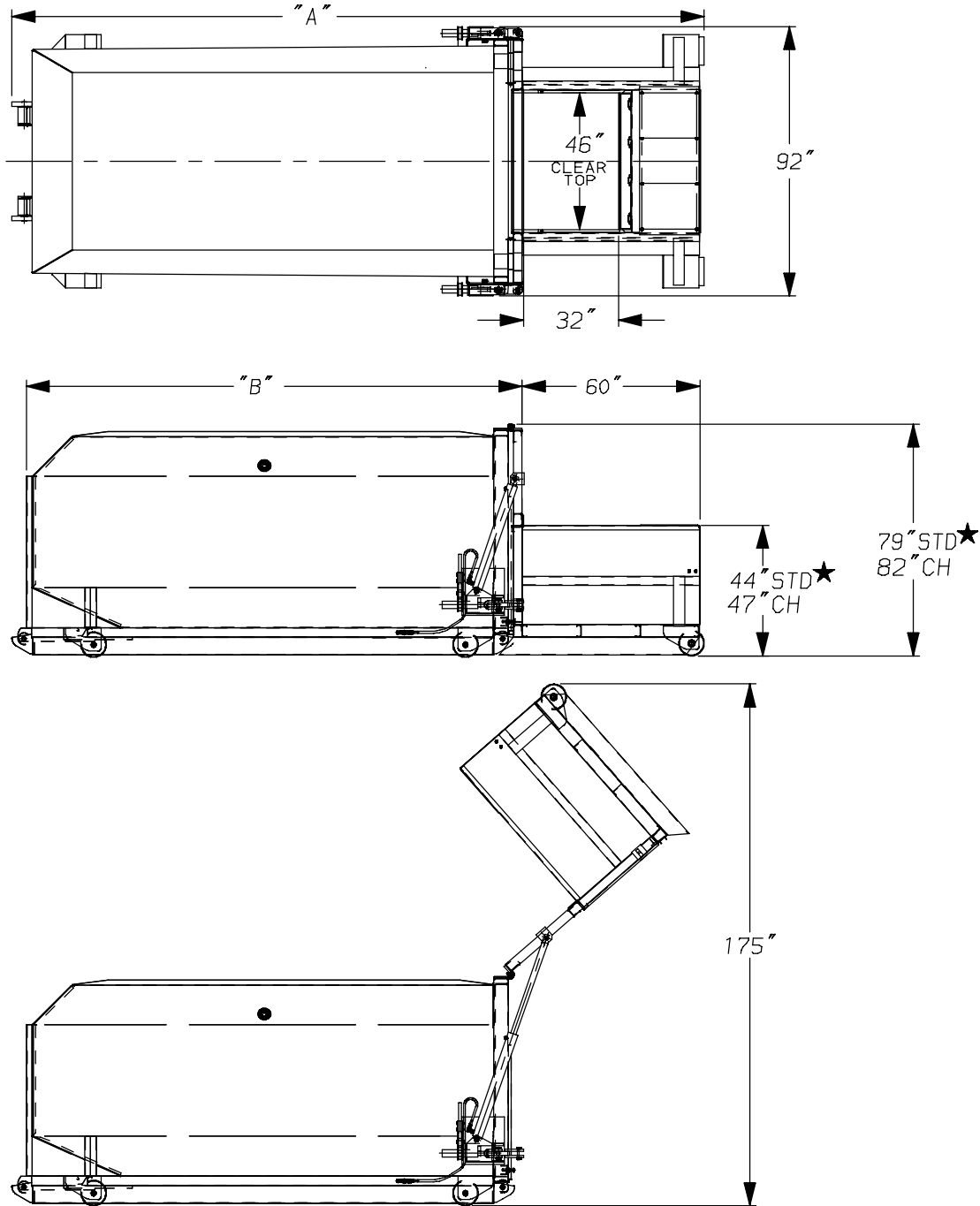
## PERFORMANCE SPECIFICATIONS

Cycle Time ..... 32 seconds  
Ram penetration ..... 16" Self-Contained  
..... 13" Hi-Tail  
Normal Packing Force ..... 42,600#  
Maximum Packing Force ..... 47,000#  
Normal Ram Face Pressure ..... 39.4 PSI  
Max. Ram Face Pressure ..... 43.5 PSI

## HYDRAULIC EQUIPMENT

Pump ..... 12 GPM 10 HP  
..... 11 GPM (Hi-Lo) 5 HP  
Normal Pressure ..... 1,850 PSI  
Maximum Pressure ..... 2,100 PSI  
Hydraulic Cylinder ..... 2 Diagonal 4" x 37" Stroke

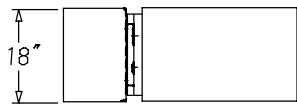
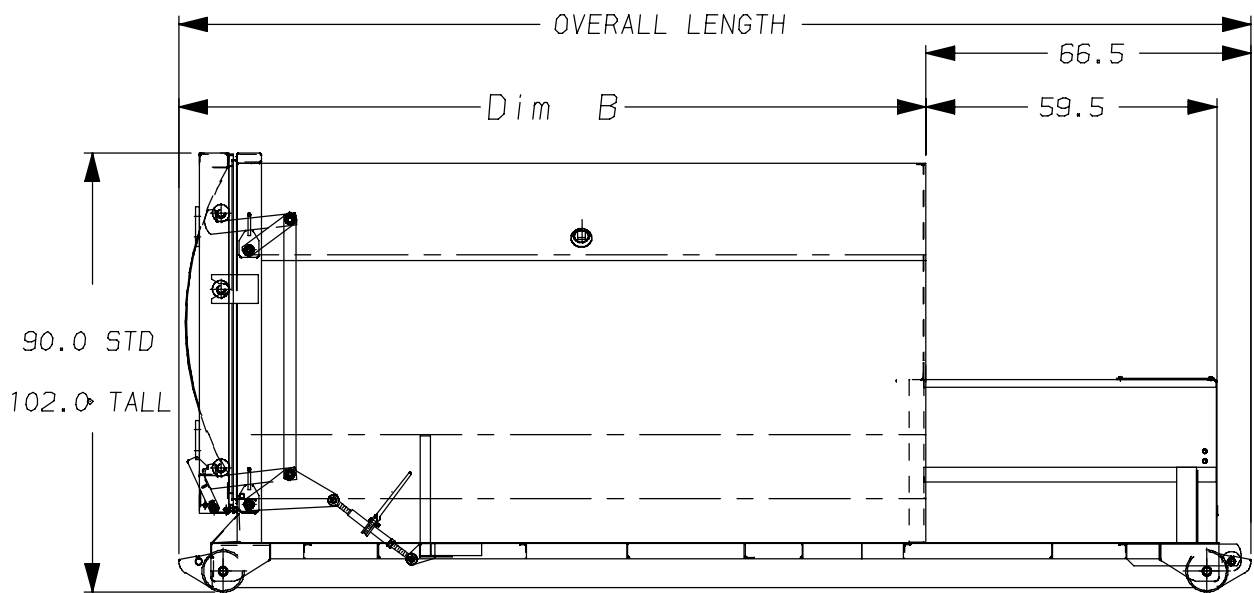
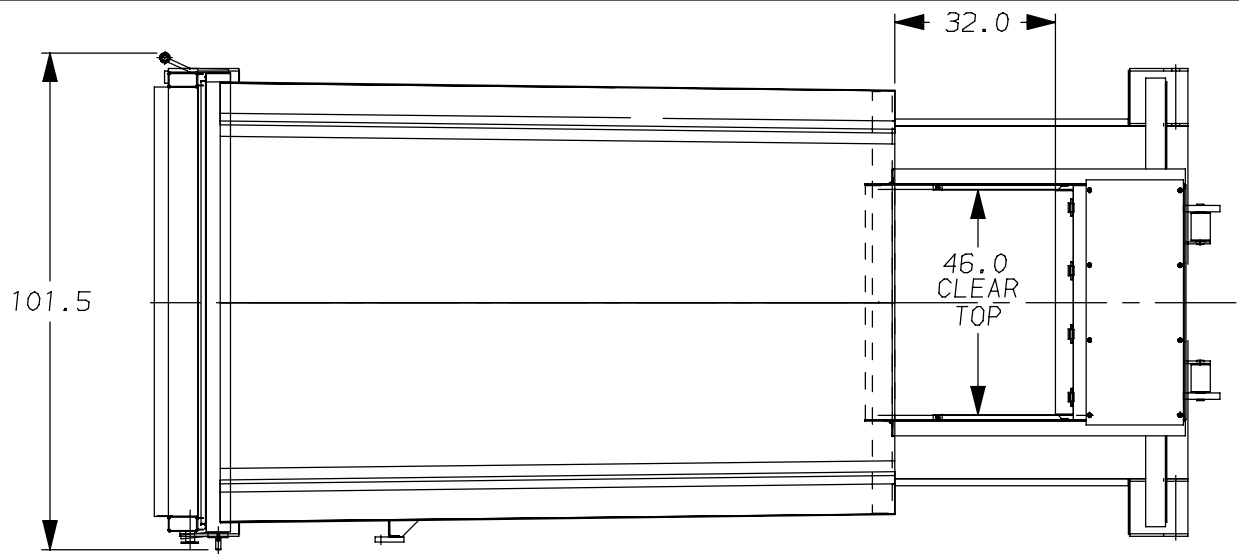
# KP1HT HI-TAIL SELF-CONTAINED



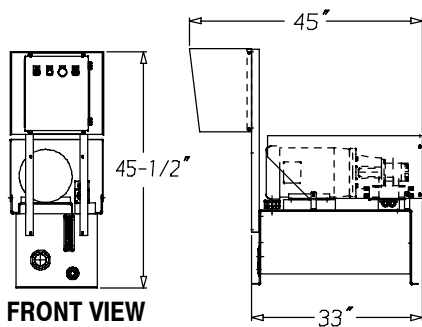
★ STD = ALL UNITS EXCEPT CHAIN HOIST UNDERSTRUCTURE    CH = CHAIN HOIST UNDERSTRUCTURE

Rev. 8/01  
M9017-2

MODEL KP1HT HI-TAIL SELF-CONTAINED 22.0 Yd <sup>3</sup>		
TOTAL CAPACITY in Cubic Yards	OVERALL LENGTH DIMENSION A	DIMENSION B
22.0	283.5"	212.0"
21.0	273.5"	202.0"
20.0	263.5"	192.0"
19.0	253.5"	182.0"
18.0	243.5"	172.0"
17.0	233.5"	162.0"
16.0	223.5"	152.0"
15.0	213.5"	142.0"



TOP VIEW



FRONT VIEW

SIDE VIEW

**MODEL KP1SC SELF-CONTAINED**

MODEL	TOTAL CAPACITY IN CUBIC YARDS	OVERALL LENGTH DIMENSION A	DIMENSION B
<b>STD.</b>	25	249	182.5
	21	219	152.5
	17	189	122.5
<b>TALL</b>	33	273	206.5
	28	243	179.5
	23	213	146.5
	19	183	116.5

# SAFETY DECALS

*Be sure to read all safety decals carefully.*

## CAUTION

**DO NOT REMOVE ACCESS COVER EXCEPT FOR SERVICING.**

**BEFORE REMOVING ACCESS COVER YOU MUST:**

- - LOCKOUT & TAGOUT DISCONNECT SWITCH
- - TURN CONTROL PANEL KEY SWITCH TO "OFF" POSITION
- - REMOVE KEY

74-378

## WARNING

**THESE CONTROLS SHALL BE LOCATED OUTSIDE THE AREA AND BEYOND THE REACH OF THE COMPACTOR.**

**DO NOT OPERATE OR SERVICE THIS EQUIPMENT UNTIL YOU HAVE BEEN PROPERLY TRAINED AND INSTRUCTED IN ITS USE AND HAVE READ THE OPERATION AND SERVICE MANUAL.**

74-274

## CAUTION

**GATE MUST BE CLOSED BEFORE OPERATING COMPACTOR**

74-309

## DANGER



## HIGH VOLTAGE

74-265

## WARNING

Escaping fluid under pressure can penetrate the skin causing serious injury. Avoid the hazard by relieving pressure before disconnecting hydraulic lines. Tighten all connections before applying pressure.

Search for leaks with a piece of cardboard. Protect hands and body from high pressure fluids.

If an accident occurs, see a doctor immediately. Any fluid injected into the skin must be surgically removed within a few hours or gangrene may result.



**INSPECT** the hose assembly before each use.

**REPLACE** the hose assembly immediately if:

- A. The jacket of the hose appears abnormal.
- B. You have reason to believe it may be abnormal.
- C. There is any fluid leakage.
- D. The couplings are damaged.
- E. The hose is damaged or kinked.
- F. The reinforcement is visible through the jacket.

74-276

## CAUTION

**OPERATORS — ALL PERSONS OPERATING THIS COMPACTOR ARE TO READ THE OPERATORS MANUAL AND UNDERSTAND THE SAFETY MESSAGES ON THIS MACHINE.**

1. Keep compactor area clean and clear of obstructions.
2. Inspect hydraulic hoses, fittings and electrical hook-up before cycling compactor. Do not use if repairs are needed.
3. Periodic inspection and maintenance is required, safety shields, access doors, and safety devices shall be functionally maintained. (See Manual)
4. DO NOT fill with heavy material, check with hauler for maximum capacity. Manual unloading may be required if overloaded.
5. Obey all warnings and safety instructions.
6. Obey all manufacturers operating instructions.

**KEEP BYSTANDERS CLEAR**

74-270

## DANGER

## DO NOT ENTER

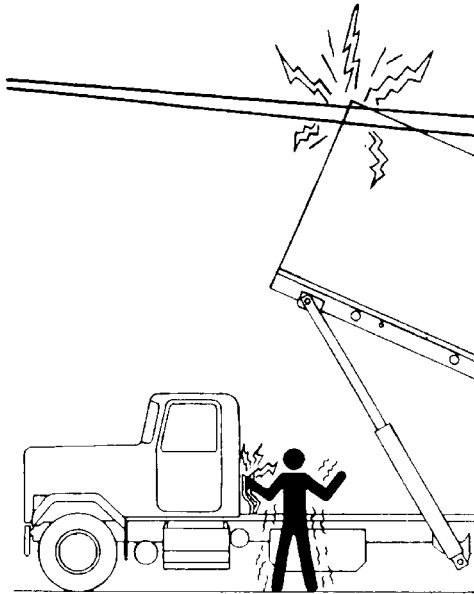
## CAUTION

## KEEP OUT

PRINTED IN U.S.A.

# SAFETY DECALS

*Be sure to read all safety decals carefully.*



**! DANGER**

**BE AWARE OF  
POWER LINES AND  
OVERHEAD  
OBSTRUCTIONS.**

CONTACT BY THE HOIST OR  
CONTAINER COULD CAUSE  
SERIOUS INJURY OR DEATH  
TO THE OPERATOR AND  
BYSTANDERS.

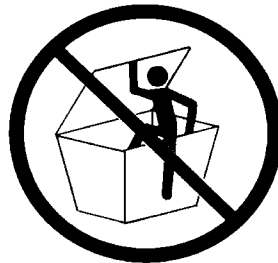
74-298

**! WARNING**

**STAND CLEAR WHEN  
TAILGATE IS IN  
MOTION AND DURING  
UNLOADING CYCLE.**

74-472

**! DANGER**



DO NOT ENTER COMPACTOR  
CRUSHING HAZARD  
(See manual for maintenance)  
SERIOUS INJURY OR DEATH  
MAY RESULT.

74-269

**! WARNING**

**MACHINE OPERATOR**

THIS SAFETY INTERLOCK SWITCH IS DESIGNED  
TO PROTECT OPERATOR FROM HAZARDOUS  
MACHINERY AND SERIOUS BODILY INJURY.

DO NOT REMOVE OR OVERRIDE THE SAFETY  
INTERLOCK SWITCH.

74-322

**WARNING**  
**STAY CLEAR AT ALL  
TIMES WHEN CONTAINER  
IS OFF GROUND.**

74-317

See page P26 in the Parts Section of this manual for proper location.

8/95

**This page intentionally left blank.**