

**STATIONARY COMPACTOR
DEALER DELIVERY CHECK SHEET
TO BE CHECKED BY DEALER**

CUSTOMER _____ DATE _____

ADDRESS _____

DEALER _____

ADDRESS _____

COMPACTOR MODEL _____ SERIAL NUMBER _____

POWER UNIT MODEL _____ SERIAL NUMBER _____

DEALER CHECK:

1. ____ Check that power unit reservoir is full of oil.
2. ____ Check that compactor is installed level, and anchored properly.
3. ____ Check that hydraulic hoses from the power pack are connected correctly.
4. ____ Check that all decals are in place and legible. Have applicable requirements of current ANSI Z245 standards been met.
5. ____ Check compactor operation, start, stop, and reverse.

DELIVERED BY _____ DATE _____

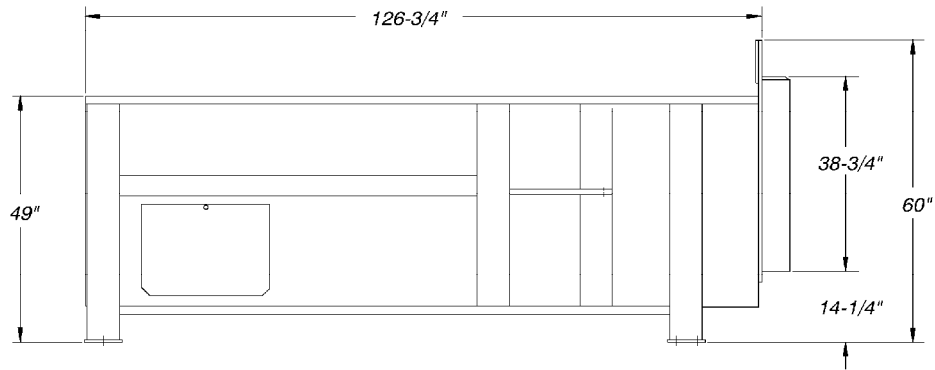
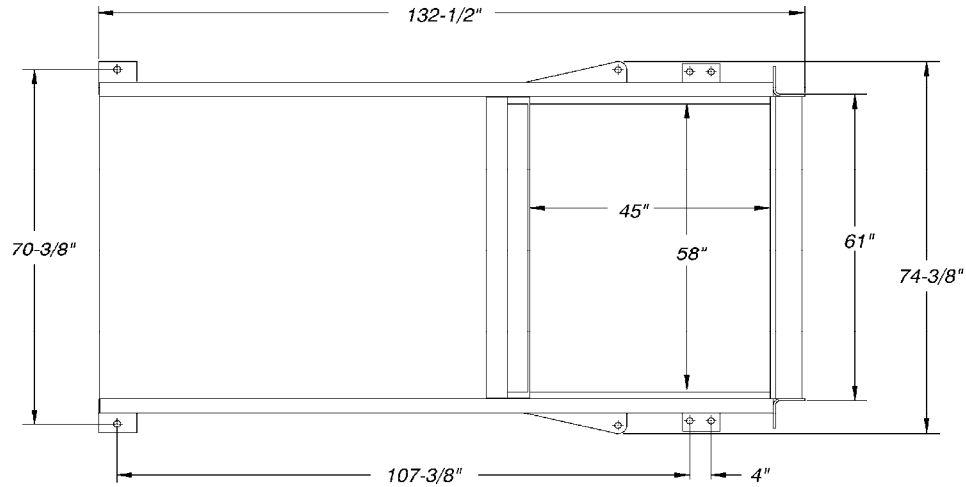
1. ____ Owner's manual has been provided.
2. ____ Warranty card is filled out and mailed.
3. ____ Reviewed the safety warnings and cautions listed in this manual.
4. ____ Reviewed the maintenance instructions and cautions as listed in this manual.

REVIEWED BY _____ DATE _____

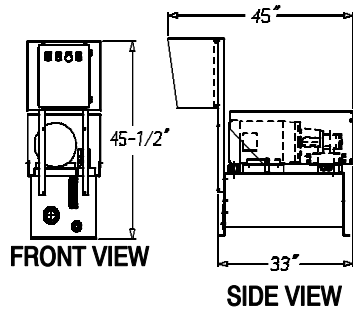
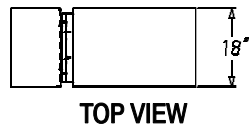
Table of Contents

Rev.5/02

WARRANTY		TROUBLESHOOTING	O13 - O15
DEALER DELIVERY CHECK SHEET	1	INSTRUCTIONS FOR CONVERTING	
TABLE OF CONTENTS	2	3-PHASE POWER UNIT VOLTAGE	O16
SPECIFICATIONS	3	OIL HEATER INSTALLATION INSTRUCTIONS	O17
SAFETY DECALS	4	HYDRAULIC GAGE KIT INSTALLATION	O18
<u>OPERATING INSTRUCTIONS</u>		<u>PARTS SECTION</u>	
INSTALLATION INSTRUCTIONS	O1	COMPACTOR & RAM ASSEMBLY	P3
Installation Site	O1	10HP 3-PHASE POWER UNIT (Serial # to 2999)	P5
Safety Decal Requirements	O2	10HP 3-PHASE POWER UNIT (Serial # 3000 & on)	P7
Electrical Installation	O3	10HP 3-PHASE POWER PANEL (Serial # to 2999)	P9
Remote Controls	O3	10HP 3-PHASE POWER PANEL	
START-UP AND TESTING INSTRUCTIONS	O4	(Serial # 3000 & on)	P11
OPERATING INSTRUCTIONS	O5	HYDRAULIC HOSES & FITTING	P12
Employer Responsibility for Compactor	O5	PRINCE HYDRAULIC CYLINDER 5 X 60	P13
Operating Instructions for Standard Compactors	O6	PRINCE HYDRAULIC CYLINDER 6 X 60	P14
Optional Features	O6	GBI HYDRAULIC CYLINDER (BY-PASS) 6 X 60	P15
MAINTENANCE INSTRUCTIONS	O6	10 HORSEPOWER HYDRAULIC SCHEMATIC	
Work Area Around Compactors	O7	(Serial # to 2999)	P16
HYDRAULIC SAFETY: READ CAREFULLY	O7	10 HORSEPOWER HYDRAULIC SCHEMATIC	
Avoid Heating Near Pressurized Lines	O7	(Serial # 3000 & on)	P17
Warnings pertaining to common abuses of hoses	O7	ELECTRICAL SCHEMATICS (Serial # to 2999):	
Preventive Maintenance	O7	MULTI-CYCLE 208-460V (Non-Bypass)	P18
Initial Check	O7	MULTI-CYCLE 220V (Non-Bypass)	P19
Monthly Check	O8	ELECTRICAL SCHEMATICS (Serial # 3000 & On):	
3-Month Check	O8	MULTI-CYCLE 208-460V (Bypass)	P20
Filter Maintenance	O8	JOG CONTROL 208-460V (Bypass)	P21
Yearly Check	O9	MULTI-CYCLE 220V (Bypass)	P22
Cylinder Pivot Pin Inspection	O9	JOG CONTROL 220V (Bypass)	P23
Power Unit Pressure Adjustment (Serial# to 2999)	O9	ELECTRIC INTERLOCK ASSEMBLY	P25
Multi-Cycle Relief Valve Setting (Serial# to 2999)	O10	STREET SIDE HOPPER	P26
Power Unit 80% Full Light Adjust. (Serial# to 2999)	O10	CURB SIDE HOPPER	P27
By-Pass Power Unit Timer Adjustment (Serial# 3000 & On)	O11	SINGLE SIDE DOOR HOPPER	P29
By-Pass Power Unit Pressure Adjustment Procedure (Serial# 3000 & On)	O12	DOUBLE SIDE DOOR HOPPER	P31
Power Unit 80% Full Light Adjustment (Serial# 3000 & On)	O12	OPEN TOP DOCK HOPPER	P32
Power Unit 100% Full Light Adjustment (Serial# 3000 & On)	O12	TOP LOAD HOPPER GROUP	P33
Multi-Cycle Relief Valve Setting Procedure (Serial# 3000 & On)	O12	DECALS	P34
GENERAL MAINTENANCE TIPS	O12		



M9121-3
Rev.5/02



SPECIFICATIONS

- Charge Chamber Capacity
 - Mfg. rating 2 yd.³
 - Wastec rating 1.72 yd.³
- Clear top opening 45" L x 58" W
- Ram face 29" x 60" x 50"
- Loading Height 49"
- Weight 4,600 lbs.
- Ram Top25"

ELECTRICAL EQUIPMENT

- Motor - 10HP 208 / 230 / 460 3-Phase 60 Cycle
- Control Voltage 115 VAC
- All circuits fused
- Key operated Start / Stop / Reverse

PERFORMANCE SPECS.

	<u>KP2S</u>	<u>KP2SH</u>
Cycle Time	45 Seconds	64 Seconds
Ram Penetration	14"	14"
Normal Packing Force	42,200#	60,770#
Maximum Packing Force	46,200#	66,530#
Normal Ram Face Pressure	24.3 PSI	35.0 PSI
Maximum Ram Face Pressure	26.6 PSI	38.3 PSI

HYDRAULIC EQUIPMENT

	<u>KP2S</u>	<u>KP2SH</u>
Pump	12 GPM	12 GPM
Normal Pressure	2,150 PSI	2,150 PSI
Maximum Pressure	2,350 PSI	2,350 PSI
Non-Bypass Cyl. (S/N to 1999)	5" x 60"	6" x 60"
Bypass Cyl. (S/N 2000 & On)	5" x 60"	6" x 60"



SAFETY DECALS

Be sure to read all safety decals carefully.

CAUTION

DO NOT REMOVE ACCESS COVER EXCEPT FOR SERVICING.

BEFORE REMOVING ACCESS COVER YOU MUST:

- - LOCKOUT & TAGOUT DISCONNECT SWITCH
- - TURN CONTROL PANEL KEY SWITCH TO "OFF" POSITION
- - REMOVE KEY

74-318

WARNING

THESE CONTROLS SHALL BE LOCATED OUTSIDE THE AREA AND BEYOND THE REACH OF THE COMPACTOR.

DO NOT OPERATE OR SERVICE THIS EQUIPMENT UNTIL YOU HAVE BEEN PROPERLY TRAINED AND INSTRUCTED IN ITS USE AND HAVE READ THE OPERATION AND SERVICE MANUAL.

74-274

CAUTION

GATE MUST BE CLOSED BEFORE OPERATING COMPACTOR

74-309

DANGER



HIGH VOLTAGE

74-265

WARNING

Escaping fluid under pressure can penetrate the skin causing serious injury. Avoid the hazard by relieving pressure before disconnecting hydraulic lines. Tighten all connections before applying pressure.

Search for leaks with a piece of cardboard. Protect hands and body from high pressure fluids.

If an accident occurs, see a doctor immediately. Any fluid injected into the skin must be surgically removed within a few hours or gangrene may result.



INSPECT the hose assembly before each use.

REPLACE the hose assembly immediately if:

- A. The jacket of the hose appears abnormal.
- B. You have reason to believe it may be abnormal.
- C. There is any fluid leakage.
- D. The couplings are damaged.
- E. The hose is damaged or kinked.
- F. The reinforcement is visible through the jacket.

74-276

CAUTION

OPERATORS — ALL PERSONS OPERATING THIS COMPACTOR ARE TO READ THE OPERATORS MANUAL AND UNDERSTAND THE SAFETY MESSAGES ON THIS MACHINE.

1. Keep compactor area clean and clear of obstructions.
2. Inspect hydraulic hoses, fittings and electrical hook-up before cycling compactor. Do not use if repairs are needed.
3. Periodic inspection and maintenance is required, safety shields, access doors, and safety devices shall be functionally maintained. (See Manual)
4. DO NOT fill with heavy material, check with hauler for maximum capacity. Manual unloading may be required if overloaded.
5. Obey all warnings and safety instructions.
6. Obey all manufacturers operating instructions.

KEEP BYSTANDERS CLEAR

74-270

DANGER

DO NOT ENTER

74-310

CAUTION

KEEP OUT

PRINTED IN U.S.A.

See pages P26-P34 in this manual for proper location of decals.

Rev.5/02